

HIKARON RIVOLI (A)



Are you selecting to order? Please copy all of the information below your selection and paste into our **Options spreadsheet**. Download the options spreadsheet in the Options section www.zenddu-catalogue.com



(Indoor) Hikaron Rivoli Cotton
(Z02-01-01)



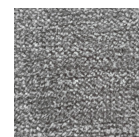
(Indoor) Hikaron Rivoli Cloud
(Z02-01-02)



(Indoor) Hikaron Rivoli Nimbus
(Z02-01-03)



(Indoor) Hikaron Rivoli
Macadamia (Z02-01-04)



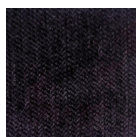
(Indoor) Hikaron Rivoli Dolphin
(Z02-01-05)



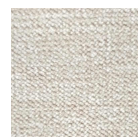
(Indoor) Hikaron Rivoli Truffle
(Z02-01-06)



(Indoor) Hikaron Rivoli Nutella
(Z02-01-07)



(Indoor) Hikaron Rivoli Black
(Z02-01-08)



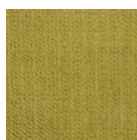
(Indoor) Hikaron Rivoli Linen
(Z02-01-09)



(Indoor) Hikaron Rivoli Tatami
(Z02-01-10)



(Indoor) Hikaron Rivoli Corn
(Z02-01-11)



(Indoor) Hikaron Rivoli Citron
(Z02-01-12)



(Indoor) Hikaron Rivoli Ginger
(Z02-01-13)



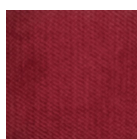
(Indoor) Hikaron Rivoli
Halloween (Z02-01-14)



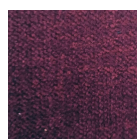
(Indoor) Hikaron Rivoli Blush (Z02-01-15)



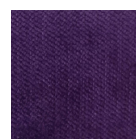
(Indoor) Hikaron Rivoli Valentine
(Z02-01-16)



(Indoor) Hikaron Rivoli Rose
(Z02-01-17)



(Indoor) Hikaron Rivoli Wine
(Z02-01-18)



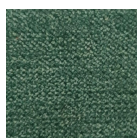
(Indoor) Hikaron Rivoli Amethyst
(Z02-01-19)



(Indoor) Hikaron Rivoli Denim
(Z02-01-20)



(Indoor) Hikaron Rivoli Oasis
(Z02-01-21)



(Indoor) Hikaron Rivoli Jungle
(Z02-01-22)

SPECIFICATION

INDOOR FABRIC RANGE A

Our fabrics are subject to availability. Batch-to-batch variation in shade may occur within commercial tolerance. **Some options may be subject to minimum quantities.**

The technical specifications of the Rivoli Collection fabric, made available by the manufacturer are as follows:

Composition: 90% Polyester, 10% Nylon

Usage: Indoor upholstery

Colour Fastness: Grade 3-4 BS EN ISO 105 – B02

Colour Fastness to Rubbing: Grade 3-4 BS EN ISO 105 – x12

Abrasion Resistance: 30,000 rubs BS EN ISO 12947 – 2

Flammability: Pass BS 5852:2006 (Smouldering cigarette)

The Rivoli Collection fabric has also been treated for soil and stain resistance. For cleaning, you can apply a detergent solution on the spot and use a soft bristle brush. Regular vacuuming with a soft brush and low suction is recommended to remove dust and dirt. Sponge cleaning is advised, and dry cleaning is suitable. Please avoid tumble drying and bleaching.

CV. Zenddu Furniture Indonesia

A registered company in Indonesia. Business Tax ID: 99.845.999.4-906.000

Administration: Bali Shipping warehouse: Jepara Web: www.zenddu.com Email: zenddu@gmail.com WhatsApp: +6281999920209