

ALUMINIUM FINISHES



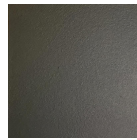
Are you selecting to order? Please copy all of the information below your selection and paste into our **Options spreadsheet**. Download the options spreadsheet in the Options section www.zenddu-catalogue.com



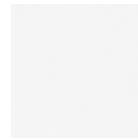
Polished Aluminium (Indoor only)
(Z05-06-01)



Satin Aluminium (Indoor only)
(Z05-06-02)



Powder Coat Aluminium, Black
(Z05-06-03)



Powder Coat Aluminium, White
(Z05-06-04)



Powder Coat Aluminium, Silver Grey
(Z05-06-05)

SPECIFICATION

Our aluminium finishes are subject to availability. Batch-to-batch variation in shade may occur within commercial tolerance. Some options may be subject to minimum quantities

The technical specifications of our aluminium finishes are as follows:

Composition: 100% Aluminium

Usage: Indoor and outdoor products

Polished Finish: The surface is polished to a high mirror-like finish. (Indoor only)

Satin Finish: The surface is rubbed with sandpaper and wire wool to create a dull satin finish. (Indoor only)

Powder Coating: A coating that is applied as a free-flowing, dry powder. Unlike conventional liquid paint, which is delivered via an evaporating solvent, powder coating is typically applied electrostatically and then cured under heat in an oven.

CV. Zenddu Furniture Indonesia

A registered company in Indonesia. Business Tax ID: 99.845.999.4-906.000

Administration: Bali Shipping warehouse: Jepara Web: www.zenddu.com Email: zenddu@gmail.com WhatsApp: +6281999920209